

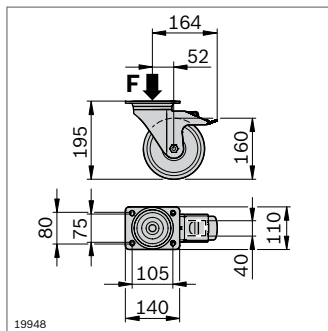
## Heavy-duty wheel



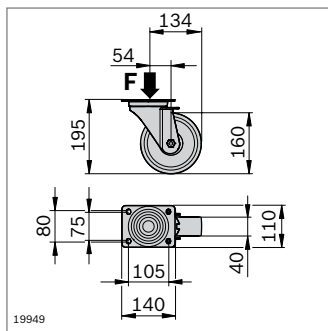
- ▶ Heavy-duty wheel with mounting flange
- ▶ Available as a caster wheel with lock, caster, and trestle wheel
- ▶ Heavy-duty, particularly suited for workshop applications
- ▶ Wheels with excellent running properties

Required accessories:

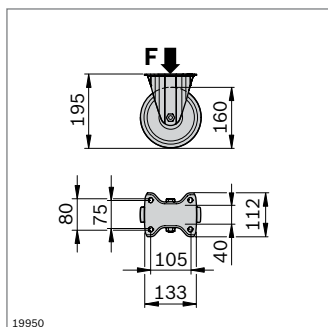
- ▶ screw M10x16 (ISO 4762), washer ISO 7089-10, lock washer 10FSt for fastening to the screw-on plate
- ▶ T-bolt, flange nut, central bolt M12 or S12 for fastening the screw-on plate to the profile frame



19948



19949



19950

Caster wheel with lock	F (N)	No.
	3000	<b>3 842 536 736</b>

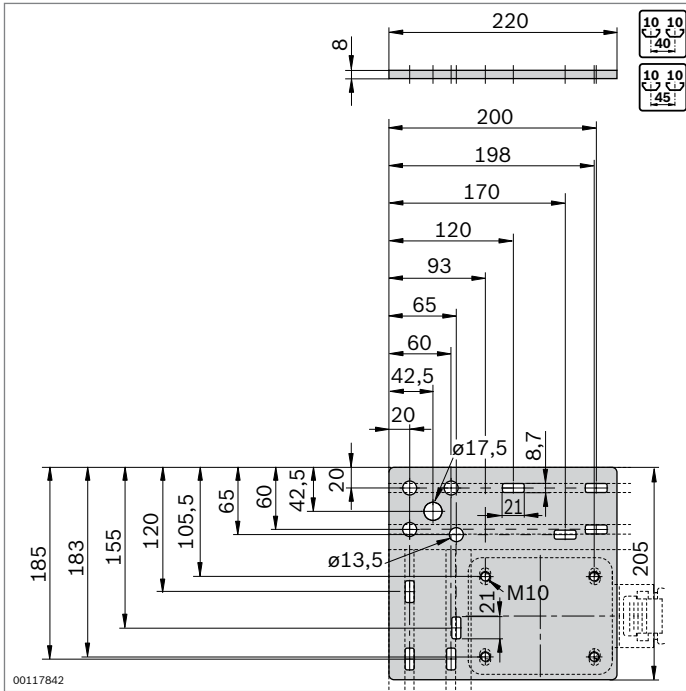
Material: Housing: steel, galvanized,  
Wheel: TPU

Caster wheel	F (N)	No.
	3000	<b>3 842 536 737</b>

Material: Housing: steel, galvanized,  
Wheel: TPU

Trestle wheel	F (N)	No.
	3000	<b>3 842 536 738</b>

Material: Housing: steel, galvanized,  
Wheel: TPU



- Screw-on plate for attachment to 40 mm or 45 mm profiles

Screw-on plate	No.
	4 <b>3 842 536 701</b>

Material: steel; galvanized